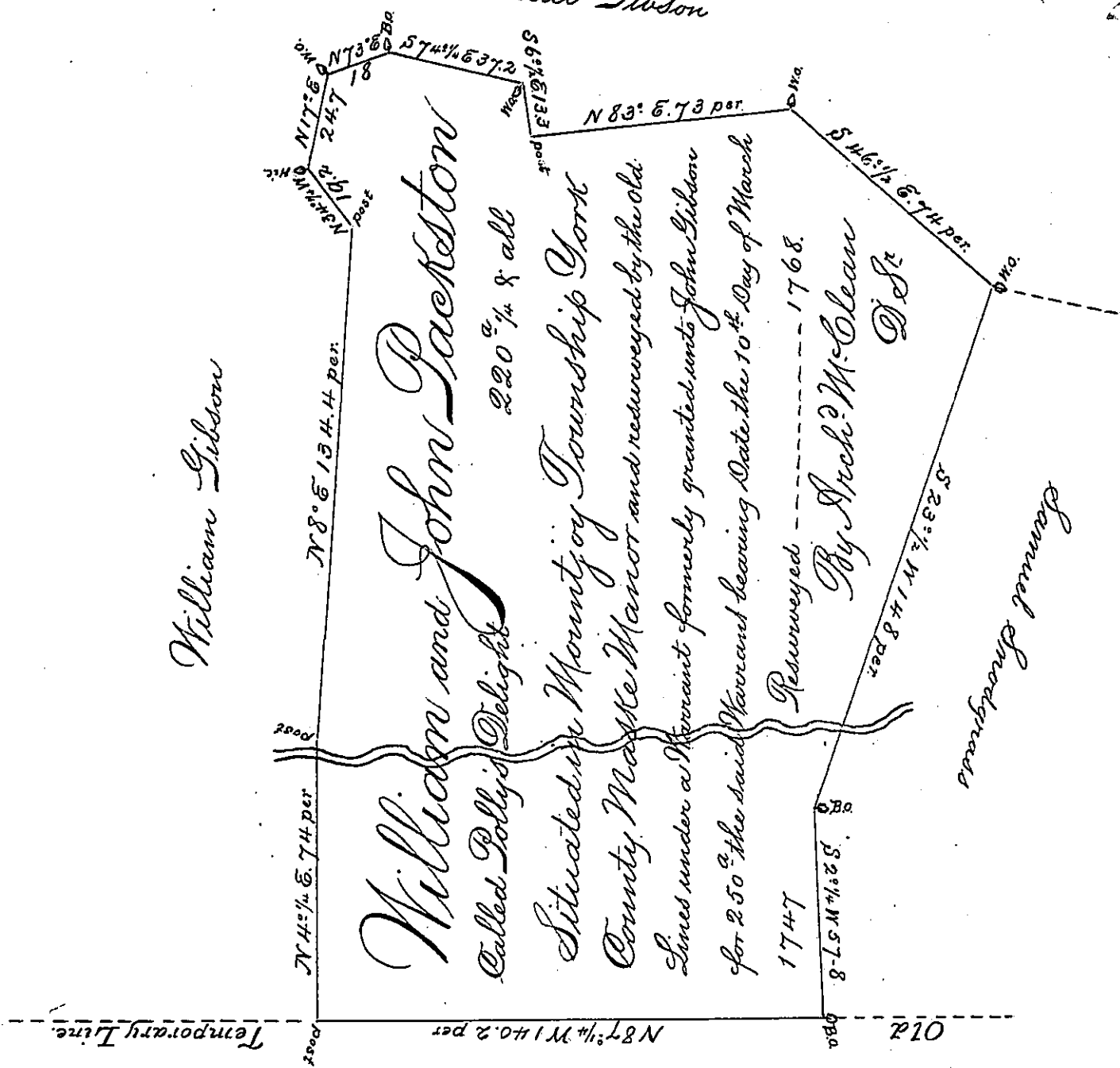


Samuel Gibson



This Tract had been formerly surveyed by George Smith Deputy Surveyor for Thomas Cookson Esq^r previous to the Execution of the Manor Warrant, And as the said Manor doth now include the Whole of the said Land I have resurveyed the same by or nearly the old Lines, that it may be agreed for

To John Lukens Esq^r }
 Surveyor General }

IN TESTIMONY that the above is a copy of the original remaining, on file in the Department of Internal Affairs of Pennsylvania, made conformably to an Act of Assembly approved the 16th day of February, 1833, I have hereunto set my Hand and caused the Seal of said Department to be affixed at Harrisburg, this fourth day of April 1899.

James W. Latta
 Secretary of Internal Affairs.